

(23)

N. line SE 1/4 SEC 29-78-4

MISSISSIPPI

1033	1039	1045	1103	1109	1117	1123	1129	1137
50	50	50.01	50.04	50.51	52.37	52.11	52.30	52.30
Matthew Howard 17223-04	Mace 185.83	Jean Lake 185.49	Mace 184.39	Mace 182.15	TRUETT 182.15	TRUETT 182.15	TRUETT 182.15	TRUETT 182.15
125	16	17	18	19	20	21	22	23
50	50	50	50	50	50	50	50	50
1034	1040	1046	1104	1110	1118	1124	1130	1138
50	50	50	50	50	50	50	50	50
1033	1039	1045	1103	1109	1117	1123	1129	1137
125	10	9	9	7	6	5	4	5
50	50	50	50	50	50	50	50	50
1036	1042	1048	1104	1110	1118	1124	1130	1138
50	50	50	50	50	50	50	50	50
1035	1041	1047	1103	1109	1115	1123	1129	1137
125	10	9	8	7	6	5	4	3
50	50	50	50	50	50	50	50	50
1038	1044	1050	1104	1110	1118	1124	1130	1138
140	10	9	8	7	6	5	4	3
50	50	50	50	50	50	50	50	50

HALL STREET

JONES STREET

RIVERVIEW

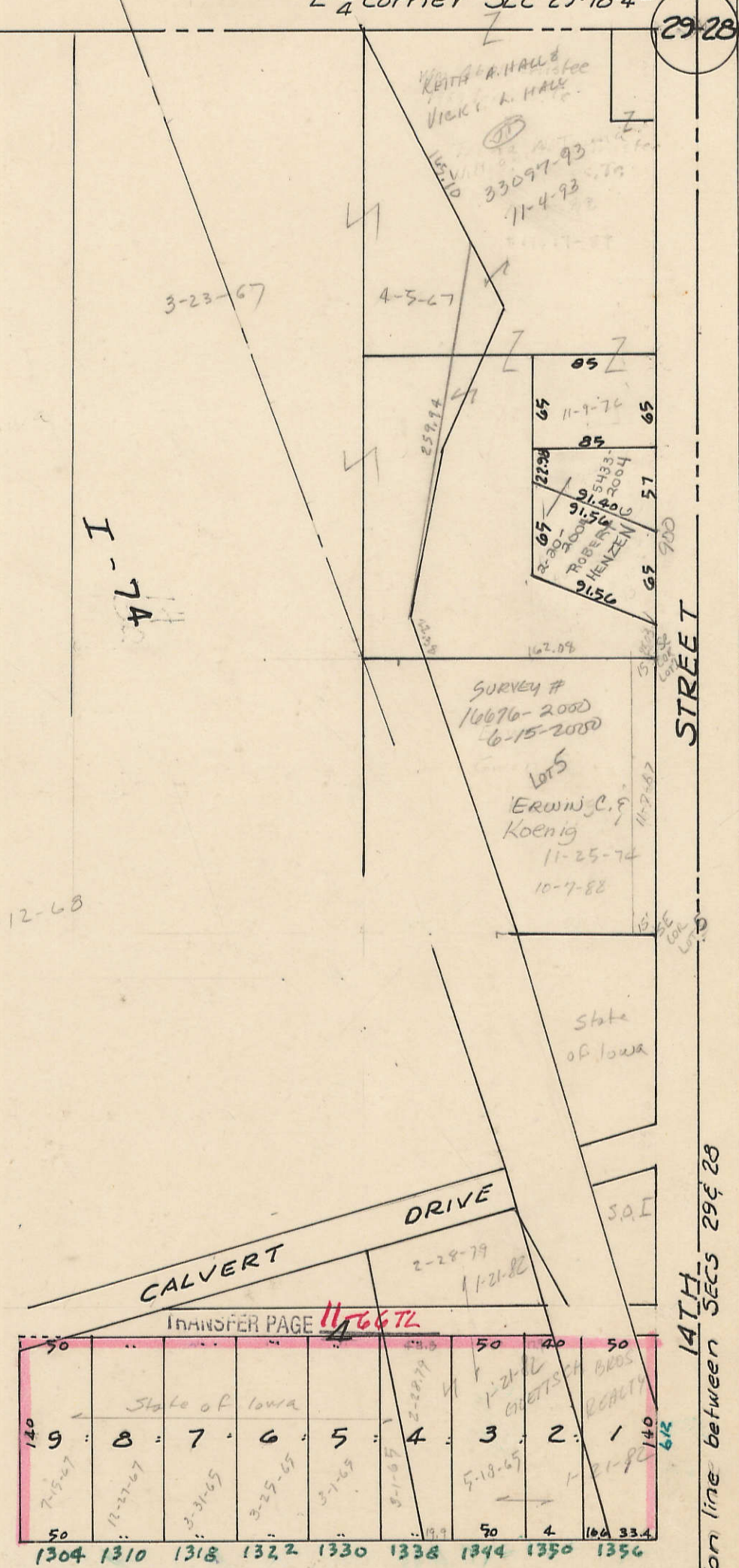
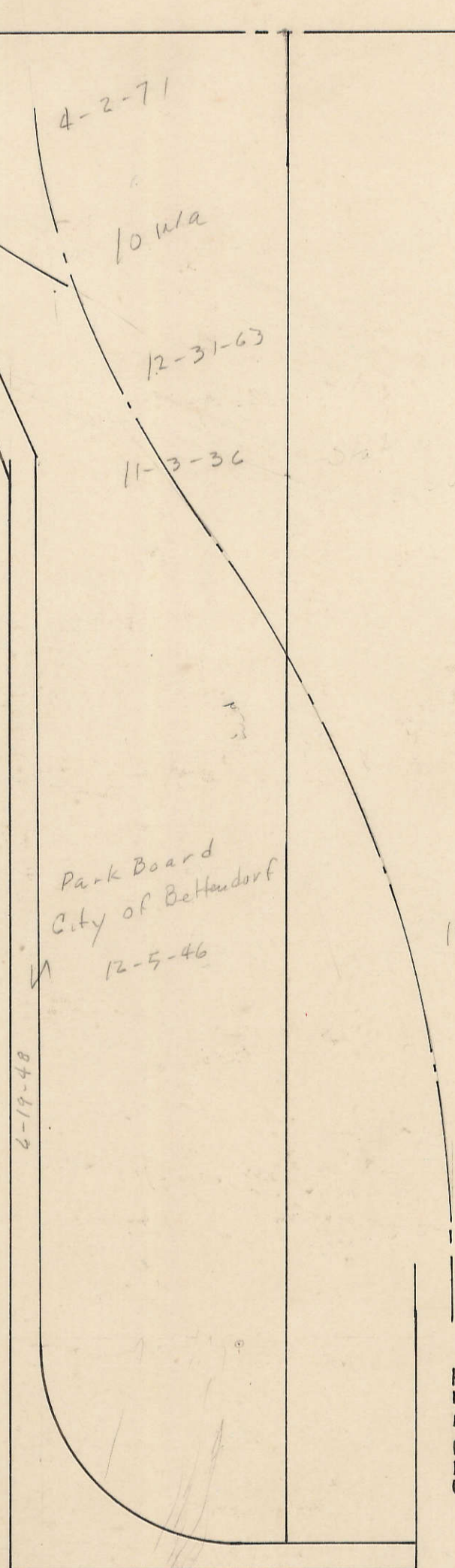
HOLMES

TRANSFER PAGE 11-105 TL

TRANSFER PAGE 11-109 TL

TRANSFER PAGE 11-107 TL

TRANSFER PAGE 11-119 TL



(37)

VOL B  
(33)  
SEC 28

STREET

1203	1209	1215	1221	1227	1233
50	40	50	50	40	50
1203	1209	1215	1221	1227	1233
140	9	8	7	6	5
50	50	50	50	50	50

C.A. FICKES

TRANSFER PAGE 6-67 TL

MISSISSIPPI BOULEVARD

1303	1309	1317	1323	1329	1337	1343	1349
50	40	50	50	40	50	50	50
1303	1309	1317	1323	1329	1337	1343	1349
140	9	8	7	6	5	4	3
50	50	50	50	50	50	50	50

EE Properties ADDITION

TRANSFER PAGE 11-37 TL

BETT Bk A, Pg 39  
Pgs 39, 40, 41 & 42 Old Bk A  
July 1980

(55)